

ALIGNMENT MONITOR QUICK START GUIDE



This Auger Torque quick start guide will enable you to get your new product up and running in no time. The complete operators manual is available on the Auger Torque website. To download a copy in pdf format, simply scan the QR code or visit www.augertorque.com.

99-95522009 - ISSUE 1-0

ENGLISH

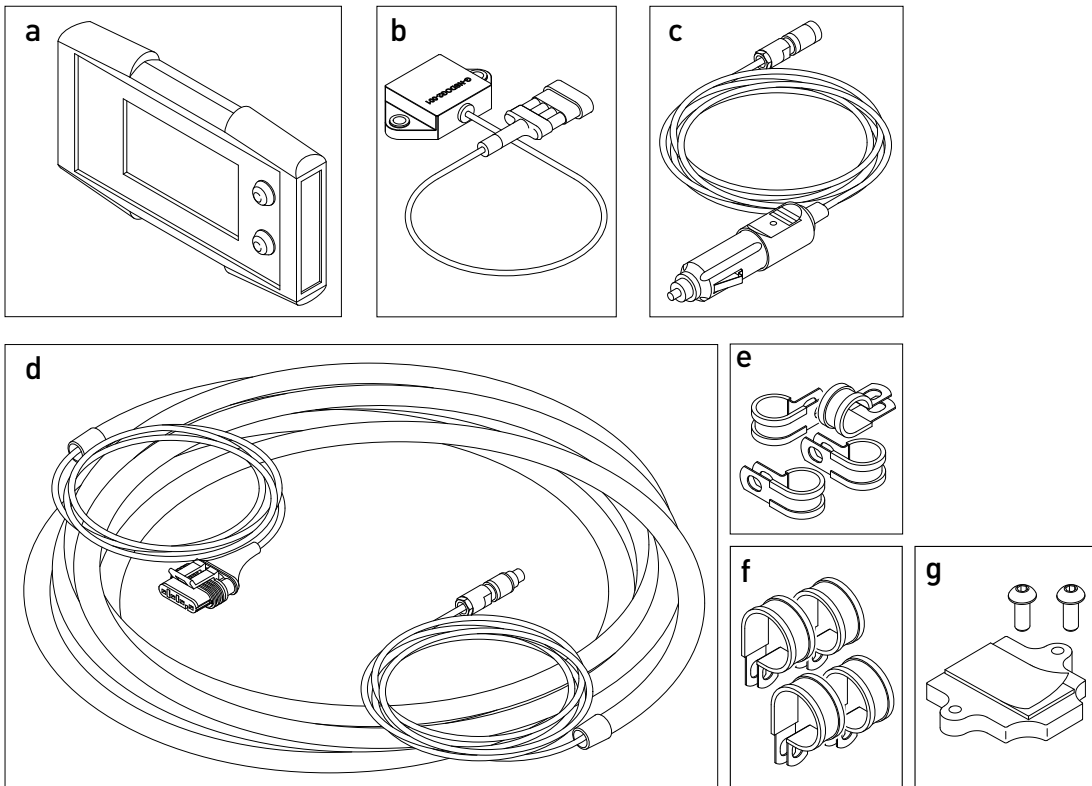
For warranty purposes this product MUST be registered with Auger Torque within 14 days of purchase by the end user.



CONTENTS

- a. Alignment Monitor (x1)
- b. Sensor Unit (x1)
- c. 12-24v Power Cable (x1)
- d. Sensor Cable Assembly (x1)
- e. Small P Clips (x4)
- f. Large P Clip (x4)
- g. Sensor Mounting Kit (x1)

Check that nothing has been damaged during transit. In case of damage contact dealer.



INSTALLATION

The Sensor

The Sensor Unit is mounted on the inside of the Earth Drill hood, to the underside of the top plate, in a suitable position.

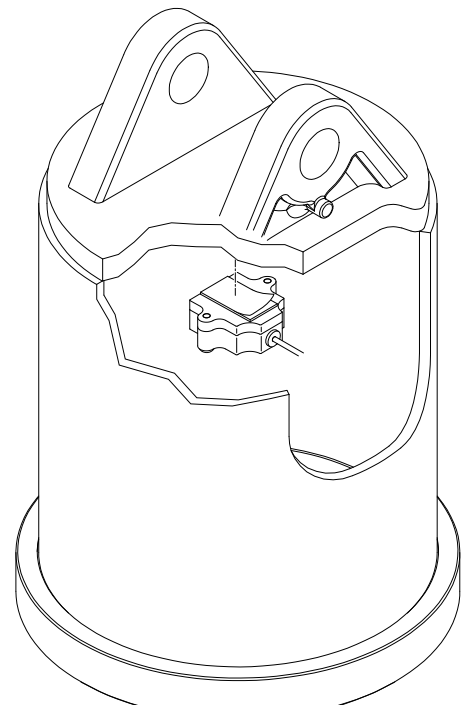
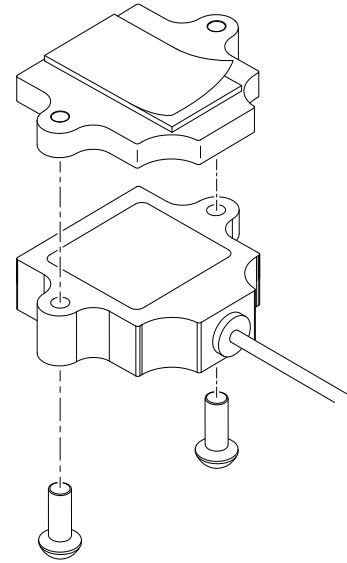
Attach the Sensor to the Earth Drill hood, ensuring the Sensor is fitted with the cable facing towards the operator's station. Hold sensor in place for 10 seconds.

Sensor Mounting Kit

The Alignment Monitor is supplied with a spare Sensor Mounting Kit. Fit the mounting plate to the resin side of the sensor. Fix the plate in place with screws supplied, adding medium strength Loctite to the threads.

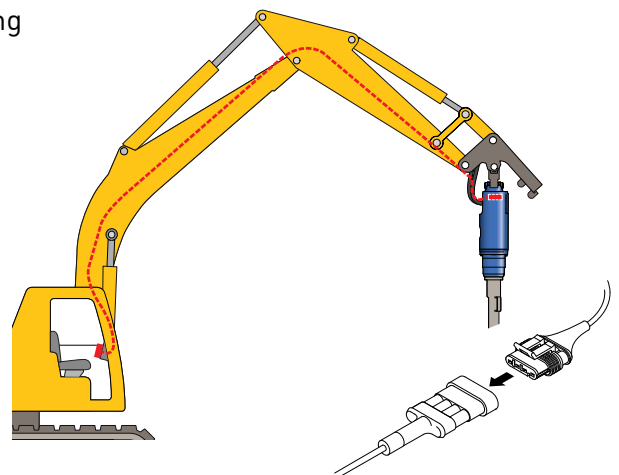
NOTE:

- Sensor must sit flat to the hood top plate.
- At room temperature approximately 50% of ultimate bond strength will be achieved after 20 minutes, 90% after 24 hours and 100% after 72 hours.
- The adhesive strip is very strong. Attempting to remove may cause damage to the sensor.



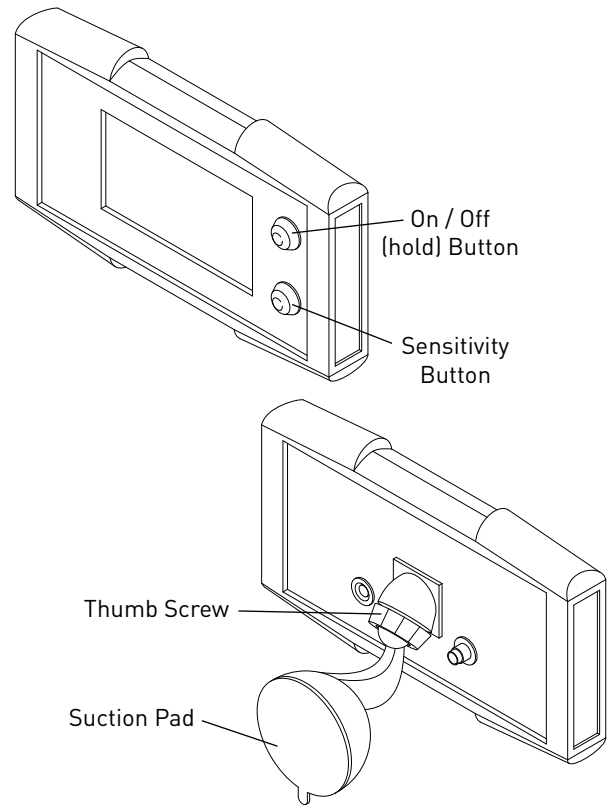
Sensor Cable

Connect the Sensor Cable plug to the Sensor and, starting from the Earth Drill route the cable along the machine to the operator's station. Secure the cable using P clips or cable ties, paying particular attention to pivot and articulation point, ensuring cable is not stretched or trapped.



Alignment Monitor

Secure Monitor using the suction pad on any suitable flat surface in a position visible to the operator. The screen can be adjusted up/down left/right by using the central thumb screw on the mounting bracket.

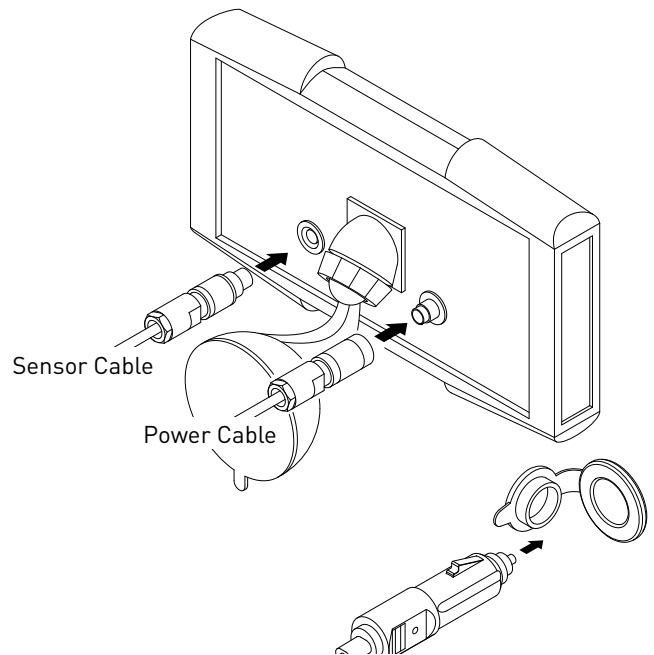


Sensor Cable

With the Monitor in the correct position connect Sensor Cable to the rear of the Monitor.

Power Cable

Connect cable to the rear of the Monitor and the auxiliary power socket.



OPERATION

Press and hold the red On/Off button on the monitor. Wait until the display is shown as (Fig 1).

Alignment Calibration

Lift Earth Drill and Auger clear of the ground so they hang free and still. With the monitor switched on, press and hold the sensitivity button for 3 seconds display will change to (Fig 2).

The monitor is now calibrated. This operation will need to be carried out each time the monitor is switched on.

Sensitivity Settings

To change the sensitivity, press the black button until the required level is obtained, indicated at the bottom right of the screen (Fig3).

There are four sensitivity levels:-

HIGH = 0.5° 1° 2° LOW = 3°

Select the sensitivity setting suitable for your drilling requirements.

Drilling

When drilling keep the white alignment marker in the centre of the circle by using forward, aft, left and right movements (Fig4).

For correct drilling alignment, the outer circle should remain green. As the white alignment marker moves away from the centre, the outer circle will change to amber and then red.

NOTE: When using auger extensions, it may be necessary to use the LOW sensitivity setting to maintain a green light.

Operating Temperature Range:

-40°C to +80°C / 40°F to +176°F

